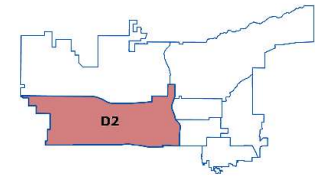




Salt Lake City PD – CompStat Report

Volume 6 – Number 39

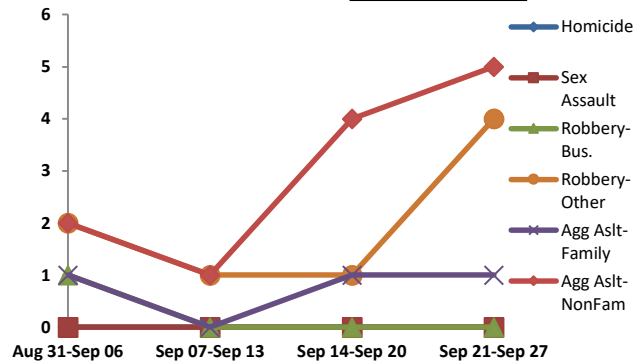


District 2 Data
(Pioneer Division)
All Offenses

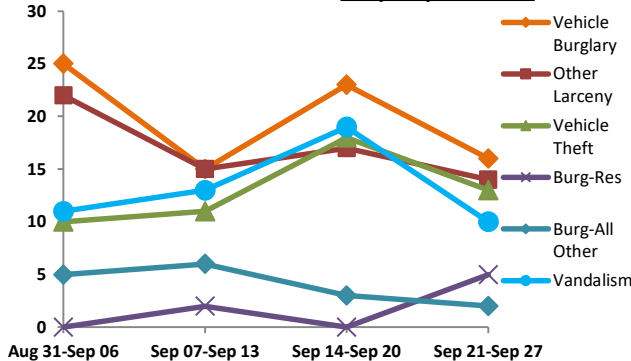
Report Covering the Week 09/21/2020 Through 09/27/2020 (Mon-Sun)

(Pioneer Division) All Offenses		Last 7 Days*				Last 28 Days*				Previous 28 Days* (Prior to Last 28 Days)			Year to Date (YTD)*			5-Year YTD Average*	
		2020	5-yr Avg	Chg	% Chg	2020	5-yr Avg	Chg	% Chg	2020	Recent Chg	Recent % Chg	2020	2019	% Chg	Avg**	% Chg
Violent Crime	Criminal Homicide	0	0.0	0.0	/0	0	0.0	0.0	/0	1	-1	-100.0%	1	2	-50.0%	1.00	0.0%
	Forcible Rape	0	0.4	-0.4	-100.0%	0	3.8	-3.8	-100.0%	2	-2	-100.0%	16	28	-42.9%	26.60	-39.8%
	Robbery - Business	0	0.8	-0.8	-100.0%	1	2.4	-1.4	-58.3%	2	-1	-50.0%	12	19	-36.8%	22.20	-45.9%
	Robbery - All Other	4	1.0	3.0	300.0%	8	4.4	3.6	81.8%	8	0	0.0%	65	49	32.7%	47.60	36.6%
	Agg. Assault - Family	1	1.0	0.0	0.0%	3	5.2	-2.2	-42.3%	9	-6	-66.7%	38	37	2.7%	41.00	-7.3%
	Agg. Assault - NonFamily	5	3.0	2.0	66.7%	12	12.2	-0.2	-1.6%	13	-1	-7.7%	106	87	21.8%	89.80	18.0%
	TOTAL VIOLENT CRIMES	10	6.2	3.8	61.3%	24	28.0	-4.0	-14.3%	35	-11	-31.4%	238	222	7.2%	228	4.3%
Property Crime	Burglary - Residential	5	3.4	1.6	47.1%	7	12.4	-5.4	-43.6%	8	-1	-12.5%	68	92	-26.1%	103	-34.0%
	Burglary - All Other	2	3.4	-1.4	-41.2%	16	10.8	5.2	48.2%	13	3	23.1%	115	117	-1.7%	127	-9.6%
	Larceny - Vehicle Burglary	16	8.8	7.2	81.8%	79	40.0	39.0	97.5%	84	-5	-6.0%	597	348	71.6%	387	54.1%
	Larceny - All Other	14	21.4	-7.4	-34.6%	68	85.4	-17.4	-20.4%	75	-7	-9.3%	683	671	1.8%	800	-14.6%
	Motor Vehicle Theft	13	8.4	4.6	54.8%	52	32.6	19.4	59.5%	47	5	10.6%	351	228	53.9%	298	17.6%
	TOTAL PROPERTY CRIMES	50	45.4	4.6	10.1%	222	181	40.8	22.5%	227	-5	-2.2%	1,814	1,456	24.6%	1,716	5.7%
GRAND TOTAL		60	51.6	8.4	16.3%	246	209	36.8	17.6%	262	-16	-6.1%	2,052	1,678	22.3%	1,944	5.6%
Misc	Drugs	19	18.8	0.2	1.1%	118	76.6	41.4	54.1%	94	24	25.5%	874	678	28.9%	659	32.5%
	Weapons	1	0.4	0.6	150.0%	18	9.6	8.4	87.5%	16	2	12.5%	114	63	81.0%	73.00	56.2%
	Vandalism	10	11.6	-1.6	-13.8%	53	44.0	9.0	20.5%	52	1	1.9%	483	414	16.7%	447	8.1%

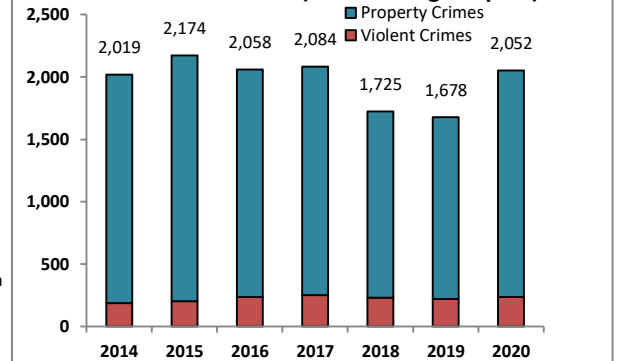
4-Week Breakdown - Violent Offenses



4-Week Breakdown - Property Offenses



Year-to-Date Totals (Jan 1 through Sep 28)



The figures included in this report are preliminary figures for general situational awareness and trend purposes only. They do not represent the official figures of the Salt Lake City Police Department and are subject to further analysis and revision. Due to the statute-driven, changing nature of crime classification and area boundaries over time, be advised that the figures contained may not fully coincide with SLCPD statistical sources. Differences are reflective of the departmental procedures or policies that were in place at the time the events occurred and the date the data was compiled. In addition, data may be approximate in relation to indicated areas. Additionally, they are not Uniform Crime Reporting (UCR) or "crime rate" numbers and are not intended to be used as such. Rather, they are a breakdown of every offense within every case that occurred during the given time periods. Although every reasonable effort is made to verify their accuracy, the accuracy of any data is subject to the constraints of the report generation process as well as the manner, format, and point in time of any query.

*The above CompStat figures were generated on Tuesday, 2 day(s) after the closing date, which is indicated in the title. The figures are current as of the date generated.

**Averages greater than or equal to 100 are rounded to a whole digit to maintain a consistent column size.

***Charts may erroneously show an apparent drop in the most current data due to some cases not yet having been reported and/or recorded.