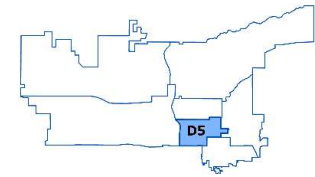




Salt Lake City PD – CompStat Report

Volume 7 – Number 21

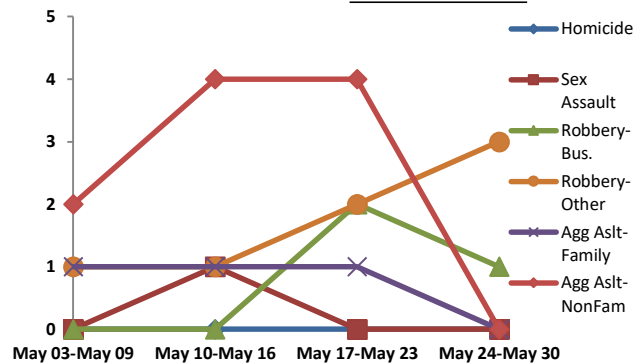


District 5 Data (Liberty Division) All Offenses

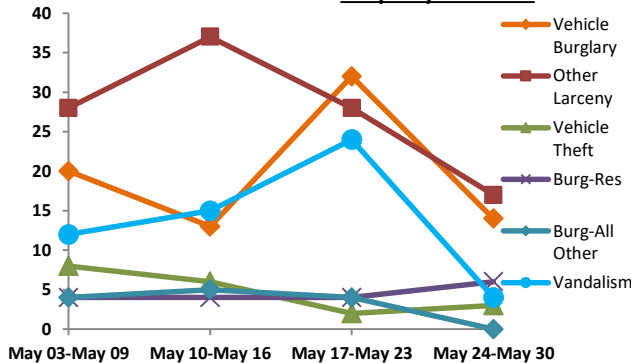
Report Covering the Week 05/24/2021 Through 05/30/2021 (Mon-Sun)

(Liberty Division) All Offenses		Last 7 Days*				Last 28 Days*				Previous 28 Days* (Prior to Last 28 Days)			Year to Date (YTD)*			5-Year YTD Average*	
		2021	5-yr Avg	Chg	% Chg	2021	5-yr Avg	Chg	% Chg	2021	Recent Chg	Recent % Chg	2021	2020	% Chg	Avg**	% Chg
Violent Crime	Criminal Homicide	0	0.0	0.0	/0	0	0.2	-0.2	-100.0%	2	-2	-100.0%	2	3	-33.3%	1.00	100.0%
	Forcible Rape	0	2.0	-2.0	-100.0%	1	4.0	-3.0	-75.0%	4	-3	-75.0%	14	18	-22.2%	18.40	-23.9%
	Robbery - Business	1	0.6	0.4	66.7%	3	2.2	0.8	36.4%	1	2	200.0%	11	12	-8.3%	10.60	3.8%
	Robbery - All Other	3	0.8	2.2	275.0%	7	3.6	3.4	94.4%	5	2	40.0%	26	24	8.3%	23.00	13.0%
	Agg. Assault - Family	0	0.4	-0.4	-100.0%	3	1.8	1.2	66.7%	2	1	50.0%	14	12	16.7%	11.00	27.3%
	Agg. Assault - NonFamily	0	2.4	-2.4	-100.0%	10	7.4	2.6	35.1%	10	0	0.0%	50	46	8.7%	35.00	42.9%
TOTAL VIOLENT CRIMES		4	6.2	-2.2	-35.5%	24	19.2	4.8	25.0%	24	0	0.0%	117	115	1.7%	99.00	18.2%
Property Crime	Burglary - Residential	6	3.2	2.8	87.5%	18	11.6	6.4	55.2%	13	5	38.5%	69	37	86.5%	62.20	10.9%
	Burglary - All Other	0	2.4	-2.4	-100.0%	13	9.0	4.0	44.4%	8	5	62.5%	66	35	88.6%	54.40	21.3%
	Larceny - Vehicle Burglary	14	13.8	0.2	1.5%	79	54.2	24.8	45.8%	61	18	29.5%	384	277	38.6%	281	36.6%
	Larceny - All Other	17	30.6	-13.6	-44.4%	110	130	-19.8	-15.3%	109	1	0.9%	580	609	-4.8%	722	-19.7%
	Motor Vehicle Theft	3	4.4	-1.4	-31.8%	19	19.4	-0.4	-2.1%	23	-4	-17.4%	136	99	37.4%	113	19.9%
	TOTAL PROPERTY CRIMES		40	54.4	-14.4	-26.5%	239	224	15.0	6.7%	214	25	11.7%	1,235	1,057	16.8%	1,234
GRAND TOTAL		44	60.6	-16.6	-27.4%	263	243	19.8	8.1%	238	25	10.5%	1,352	1,172	15.4%	1,333	1.5%
Misc	Drugs	18	21.8	-3.8	-17.4%	74	93.6	-19.6	-20.9%	49	25	51.0%	342	389	-12.1%	455	-24.8%
	Weapons	3	1.6	1.4	87.5%	12	5.8	6.2	106.9%	7	5	71.4%	43	24	79.2%	29.20	47.3%
	Vandalism	4	10.0	-6.0	-60.0%	55	38.8	16.2	41.8%	33	22	66.7%	246	209	17.7%	209	17.7%

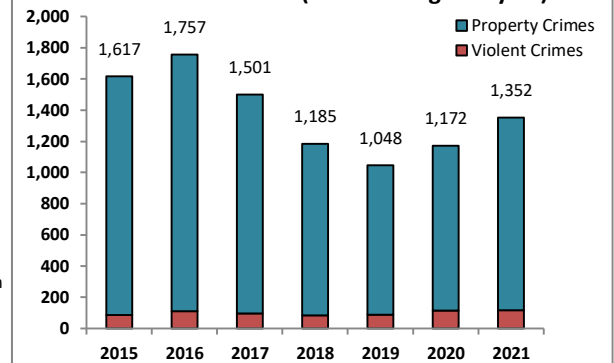
4-Week Breakdown - Violent Offenses



4-Week Breakdown - Property Offenses



Year-to-Date Totals (Jan 1 through May 31)



The figures included in this report are preliminary figures for general situational awareness and trend purposes only. They do not represent the official figures of the Salt Lake City Police Department and are subject to further analysis and revision. Due to the statute-driven, changing nature of crime classification and area boundaries over time, be advised that the figures contained may not fully coincide with SLCPD statistical sources. Differences are reflective of the departmental procedures or policies that were in place at the time the events occurred and the date the data was compiled. In addition, data may be approximate in relation to indicated areas. Additionally, they are not Uniform Crime Reporting (UCR) or "crime rate" numbers and are not intended to be used as such. Rather, they are a breakdown of every offense within every case that occurred during the given time periods. Although every reasonable effort is made to verify their accuracy, the accuracy of any data is subject to the constraints of the report generation process as well as the manner, format, and point in time of any query.

*The above CompStat figures were generated on Tuesday, 2 day(s) after the closing date, which is indicated in the title. The figures are current as of the date generated.

**Averages greater than or equal to 100 are rounded to a whole digit to maintain a consistent column size.

***Charts may erroneously show an apparent drop in the most current data due to some cases not yet having been reported and/or recorded.